

**Integral Enterprise Viewer™**  
A member of the  
**Integral Enterprise Data Access Series™**

Sample Solutions

**Using JetForms with Integral to Produce Bar-Coded Reports**



©Copyright 2002, Decision Resources, Inc. All rights reserved.

“Integral Enterprise Viewer” and “Integral Enterprise Data Access Series” are trademarks of Decision Resources, Inc.

## I. JetForm Example

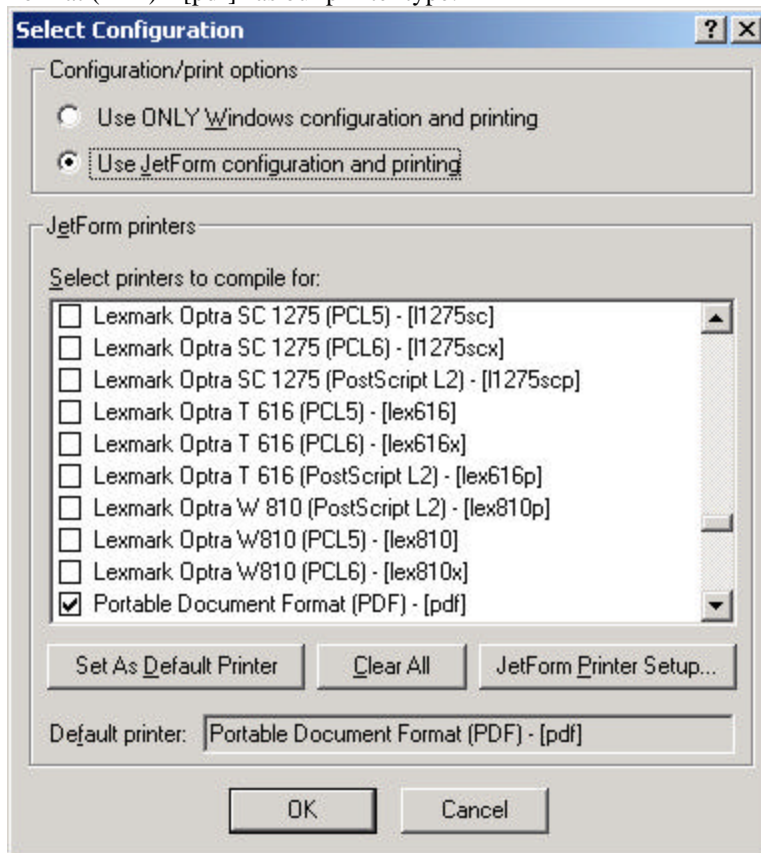
**Problem:** A customer running SyteLine and who owns SyteLine Advanced Forms (JetForms) wants to prepare bar-coded shelf labels for each item stored in each location in each warehouse.

**Solution:** The customer created a layout of the bar-coded form using JetForm Designer 5.3, laying out the fields they wanted, and designating which items should print in bar-coded format. This form was then saved and compiled, and it was added as a Job to their JetForm Central Control, and assigned to create a “.PDF” file for output. Then an Integral Inquiry was developed in the Design tool, extracting the data that appears on the bar-coded forms. This inquiry was then run from the Integral LAN client, with its output directed to the JetForm job we had just created – creating a bar-coded PDF-file for the selected data.

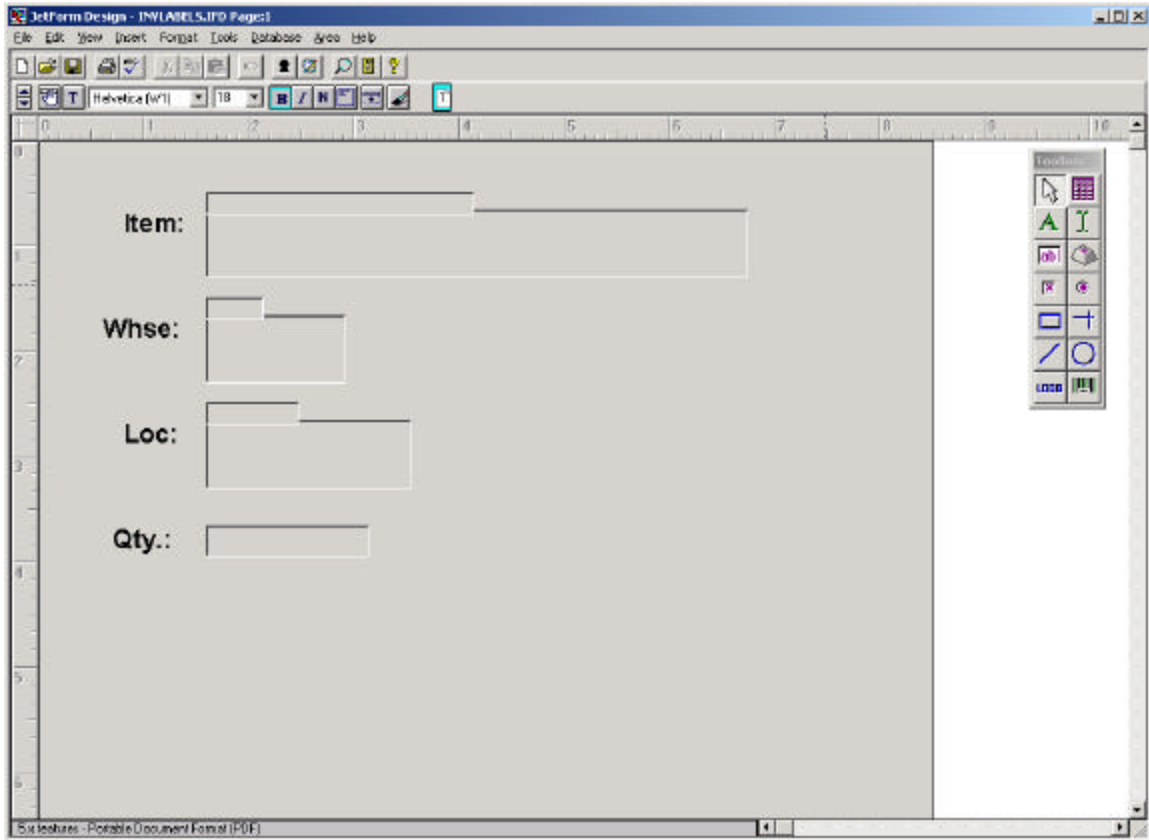
The result is an easy ability to select and to print bar-coded shelf labels from the Integral LAN client. Using techniques described in other of these Integral Solutions, any of these bar coded forms can easily be invoked from SyteLine screens.

Detailed Screen Shots of the Solution:

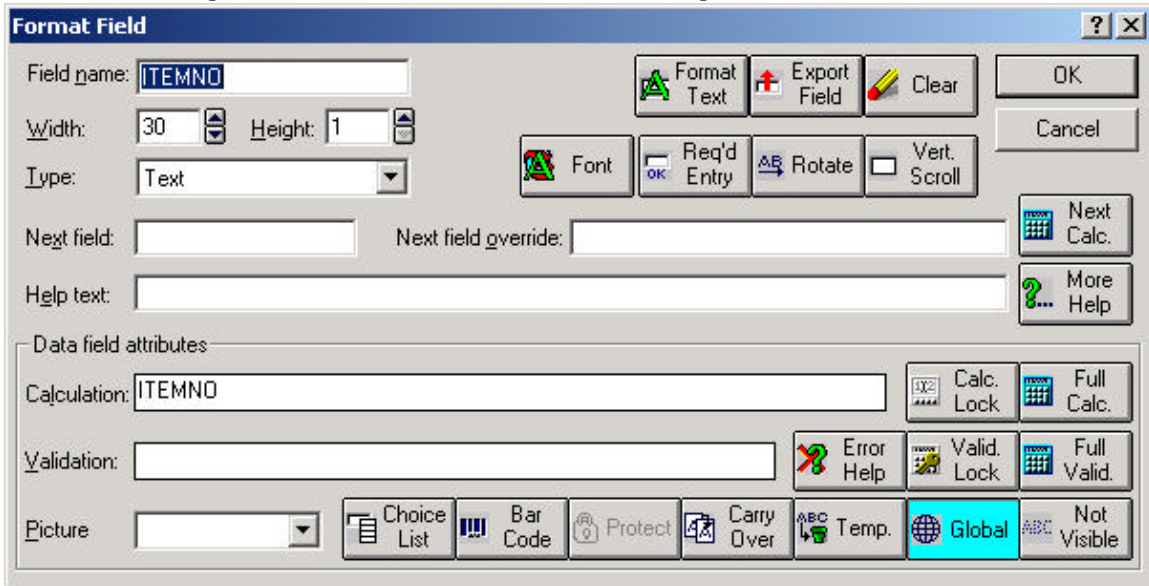
a. We invoke JetForm Design, 5.3 (part of SyteLine Advanced Forms 6). We select “File – Printer/Driver Setup” & select “Use JetForm Configuration and Printing” at the top, and select “Portable Document Format (PDF) – [pdf]” as our printer type:



b. Next we select “File – New” to create a new layout. We also select “File – Save As” and save our layout as “INVLABELS.IFD”. On the form we drop four texts, which we label “Item,” “Whse,” “Loc,” and “Qty.” Next to these labels we drop four fields (type text) to hold the printed values of those items, from the SyteLine database. For the fields “Item,” “Loc,” and “Whse,” we drop larger fields where the values will be printed as code 3 of 9 Barcodes. Here’s what our form looks like:

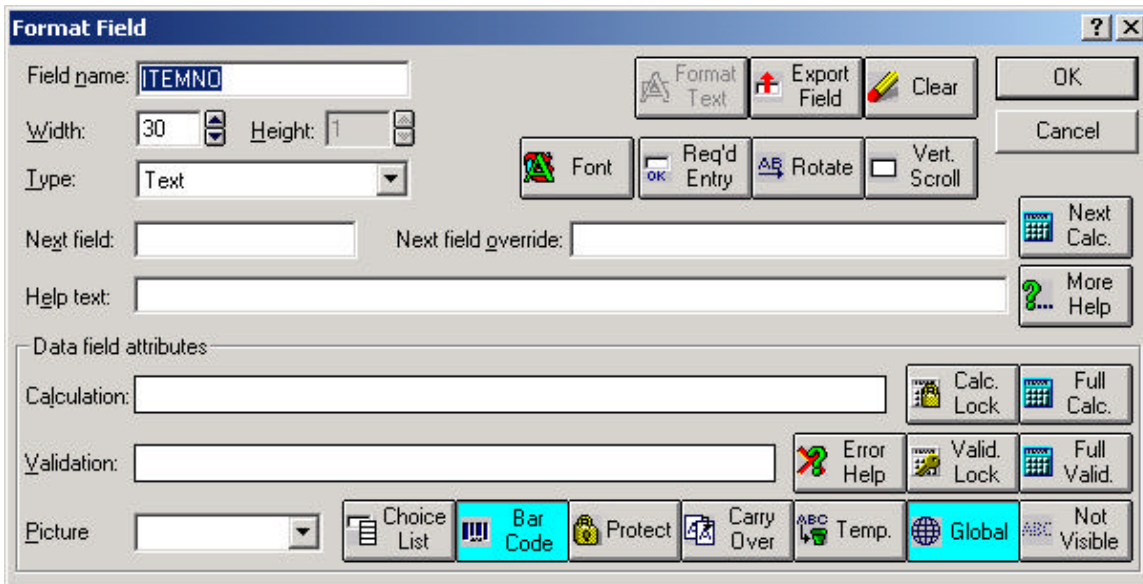


Double-click the topmost, small Item field and see how it is set up:

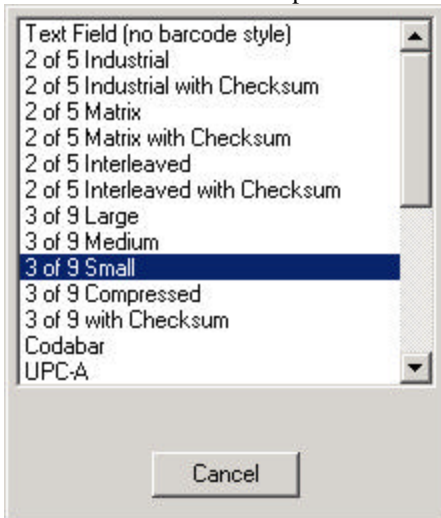


Note: Global is selected. This is necessary for SytelLine fields like ITEMNO that are actually used to fill in two separate printed fields on the output (one in text and the other in barcode).

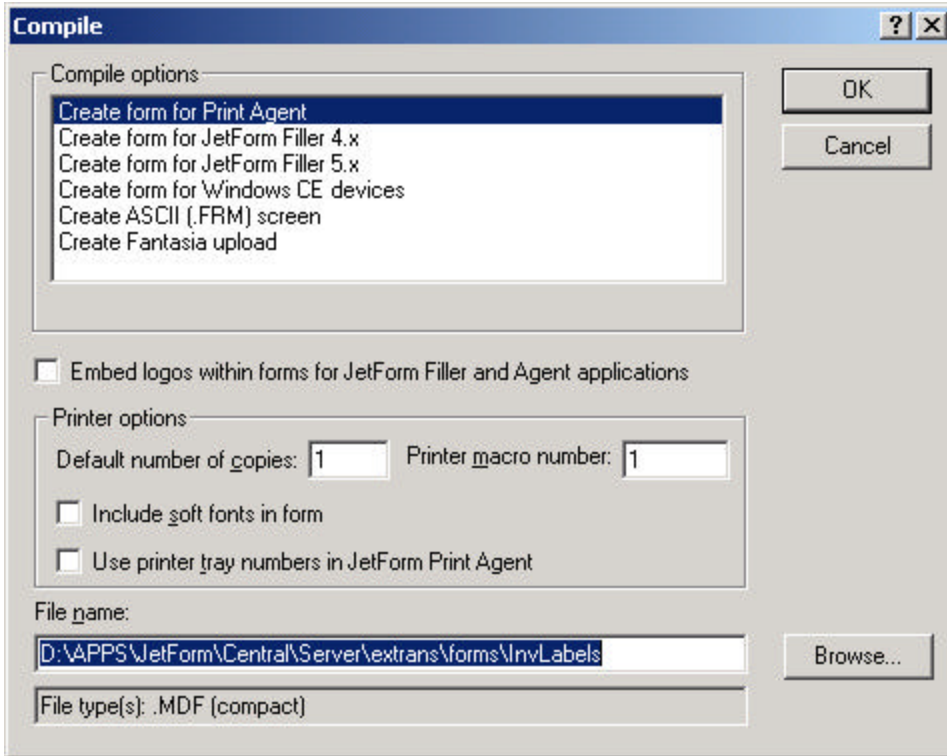
For comparison, here is the larger barcode ITEMNO field (right below the small field we just looked at):



Note that the “Bar Code” option is selected. Within that choice, we selected the symbology “3 of 9 Small.”

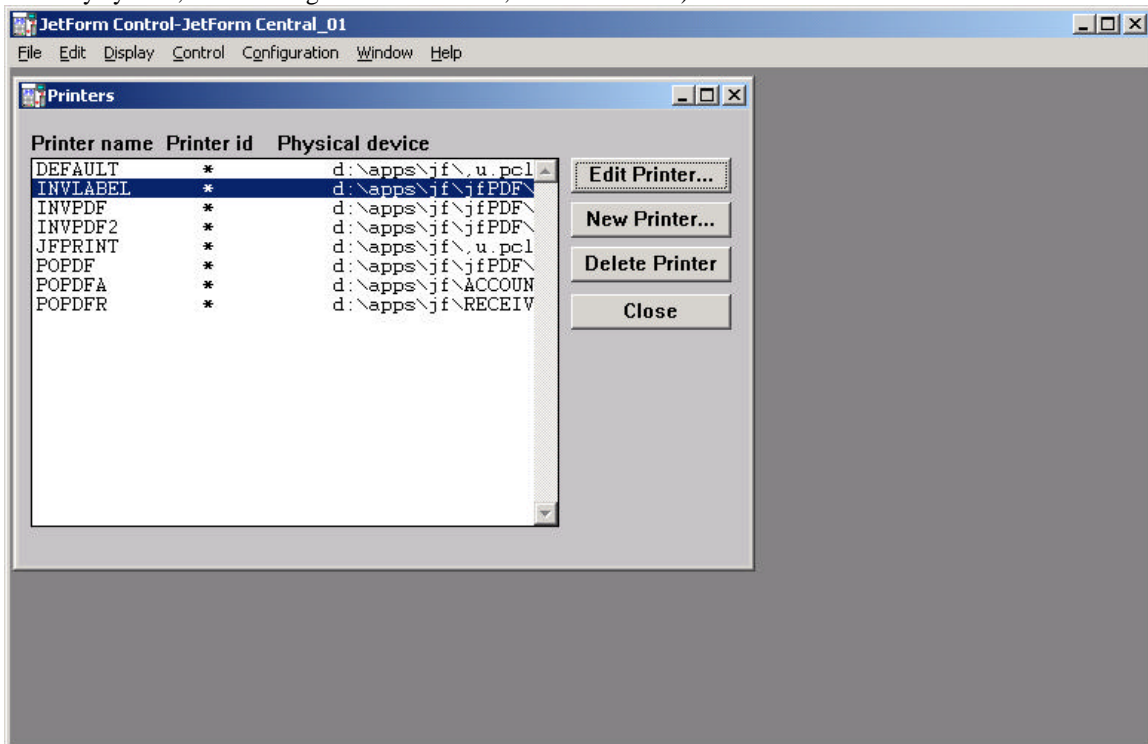


c. After the field has been laid out, we do another ‘File – Save’ and then do a “File – Compile,” selecting “Create form for Print Agent,” and instructing JetForm Design where we want the compile form (the .MDF-file) to be saved:



d. Now we are ready to setup JetForm Central Control for this new report.

Begin by selecting 'File – Job Management Database – Printers.' (Illustrated below is the list of printers from my system, after having added a new one, "INVLABEL.")



Here is the screen we fill in, after selecting “New Printer” or “Edit Printer”:

**Edit Printer**

**Printer Name:** INVLABEL      **Printer id:** [dropdown]

**Add Managed Memory...**

**Physical Device:** d:\apps\jff\pdf\INVLABEL.PDF

**Print Agent options:** \*

**Priority:** 50

**Comments:** \*

**OK**      **Cancel**

Note we can specify a specific file name (as above), or we could have it create a new & random file name (in a specified directory) each time the Job is printed, by a Physical Device name like:  
D:\APPS\JF\U.PDF.

e. Now we add our Job to the JetForm Job Management Database “File – Job Management Database – Jobs”

**JetForm Control-JetForm Central\_01**

File Edit Display Control Configuration Window Help

**Jobs**

**Job name**

- DEFAULT
- EMAILDEF
- FORMS-COPY
- FORMS-DISTRIBUTION
- FORMS-INQUIRY
- INVLABEL
- INVLABELS2
- SY99234A
- SY99234B
- SY99234C
- SYAP23
- SYBOL3
- SYER23
- SYINV23
- SYOV23
- SYFAC234
- SYFIC234
- SYF023
- SYPR234

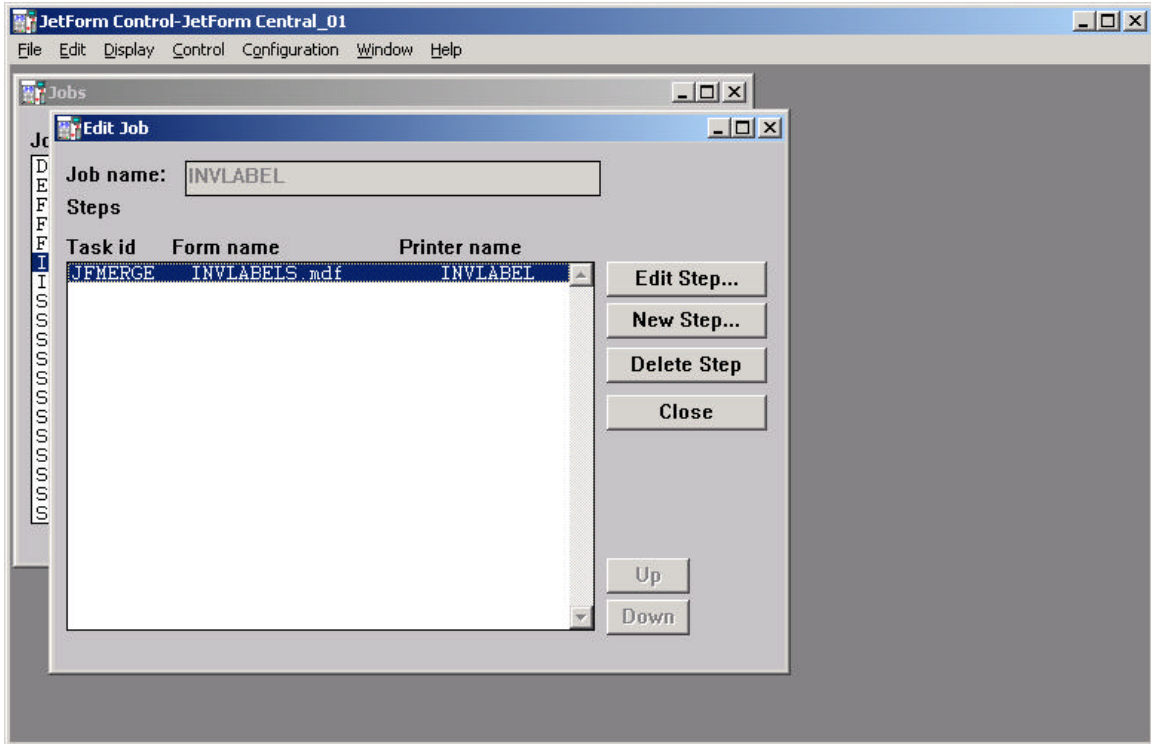
**Edit Job...**

**New Job...**

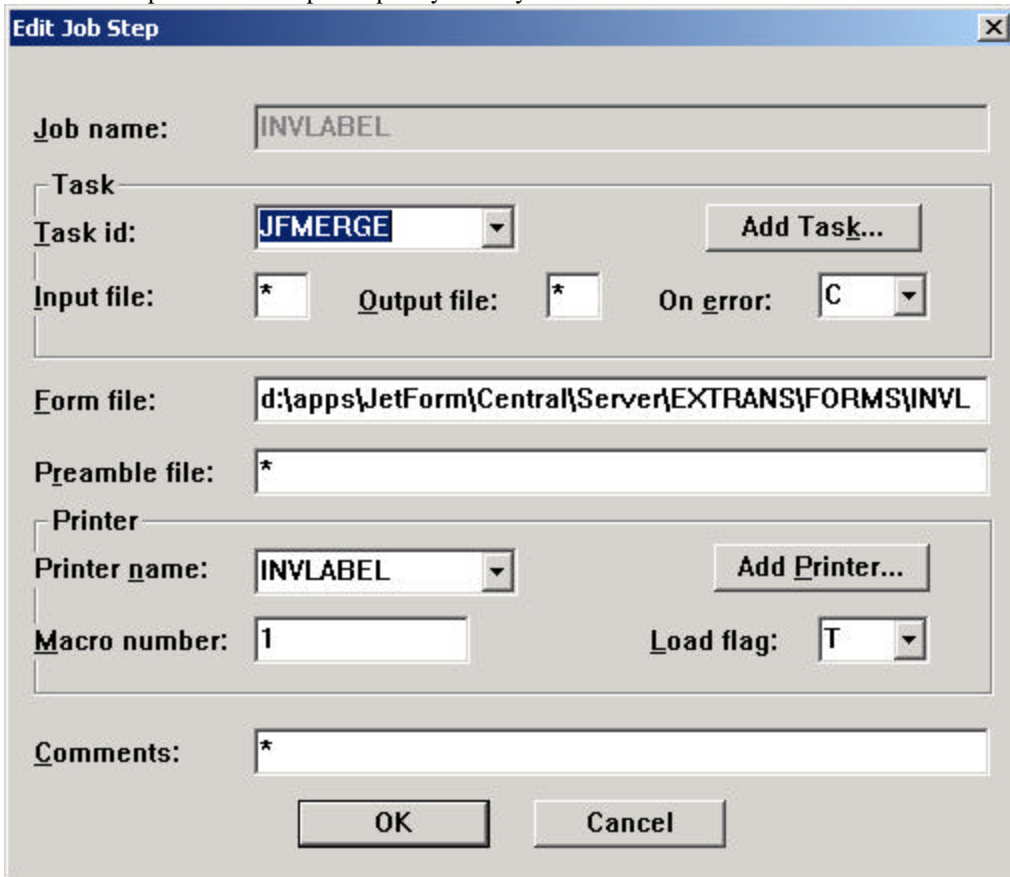
**Delete Job**

**Close**

Hit “New job” or “Edit Job” to add or update the steps in a job:



Hit “New Step” or “Edit Step” to specify exactly what the Job does:

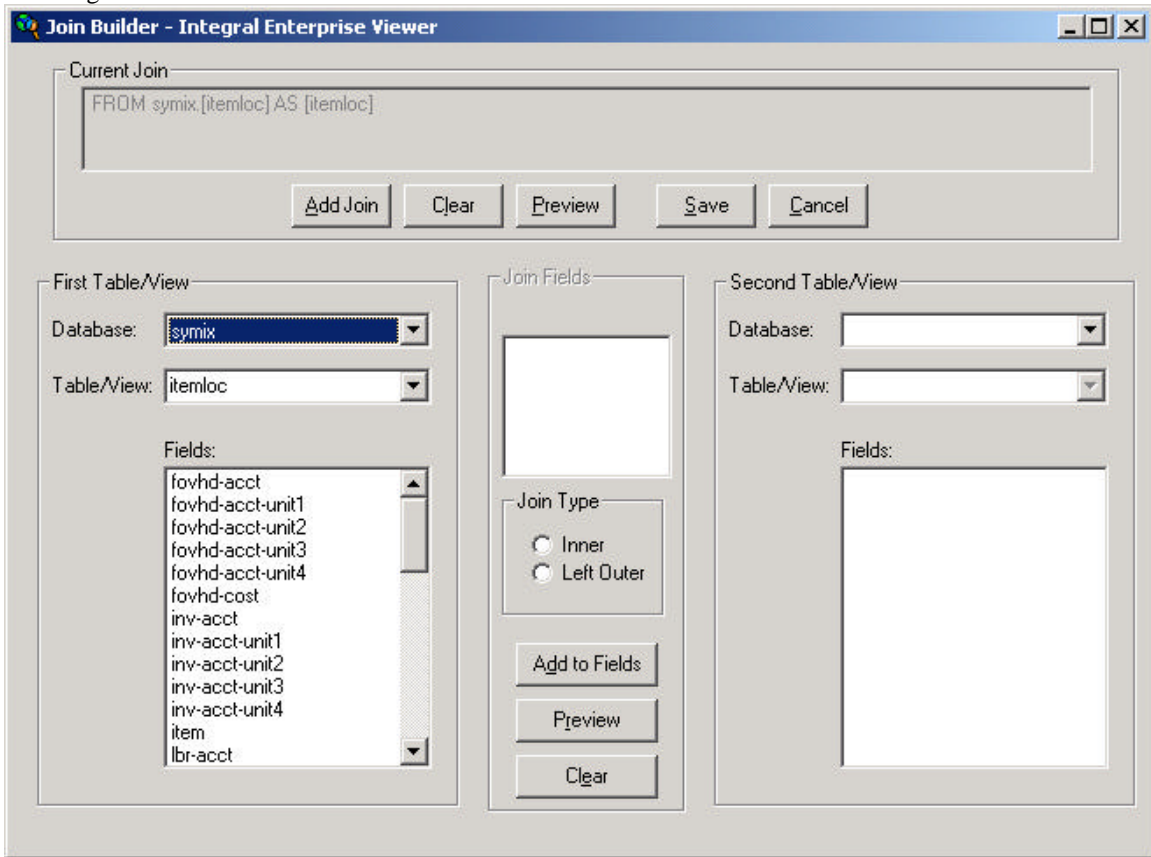


Notes: “JFMERGE” invokes the JetForm Print Agent. The “Form File” must reference the compiled form definition we created earlier. Similarly, the “Printer name” references the Printer we just created.

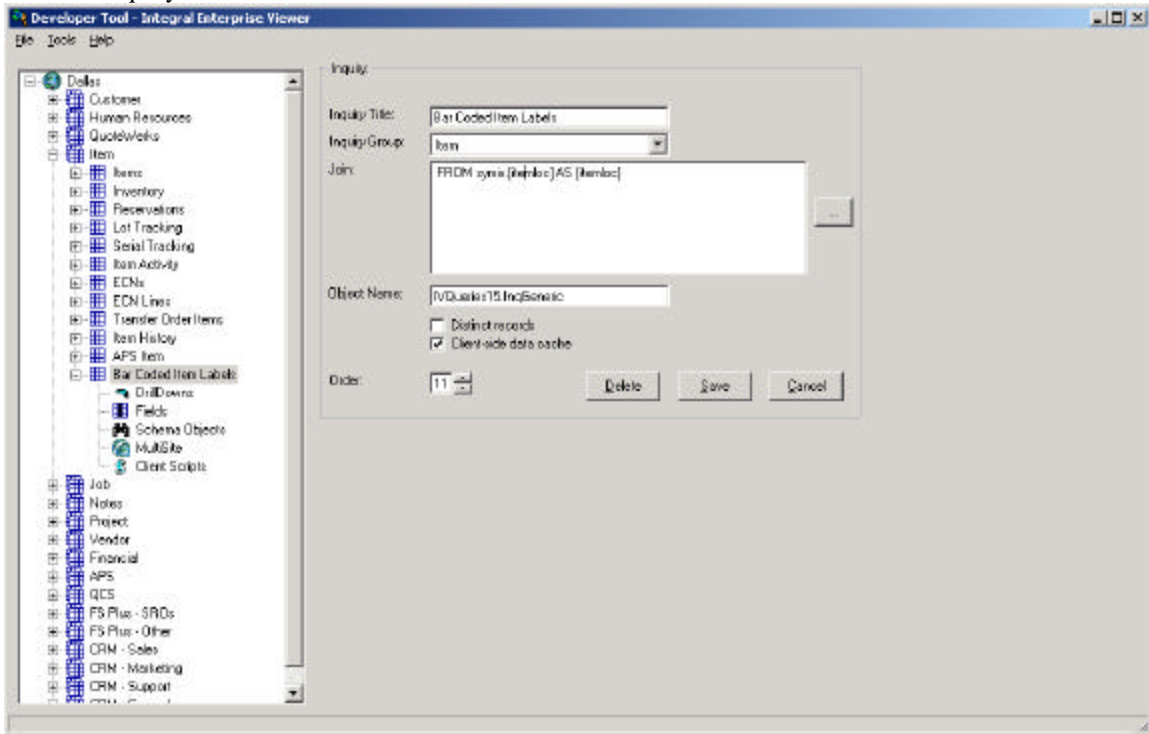
After making changes to the JetForm Control Job Management Database, we can select “Control – Reload Job Management DB” to put the changes into effect (stopping and restarting JetForm Control also accomplishes this).

f. Now we go to the Integral Enterprise Viewer Developer Tool to design our inquiry to collect that data that we will pass to JetForms.

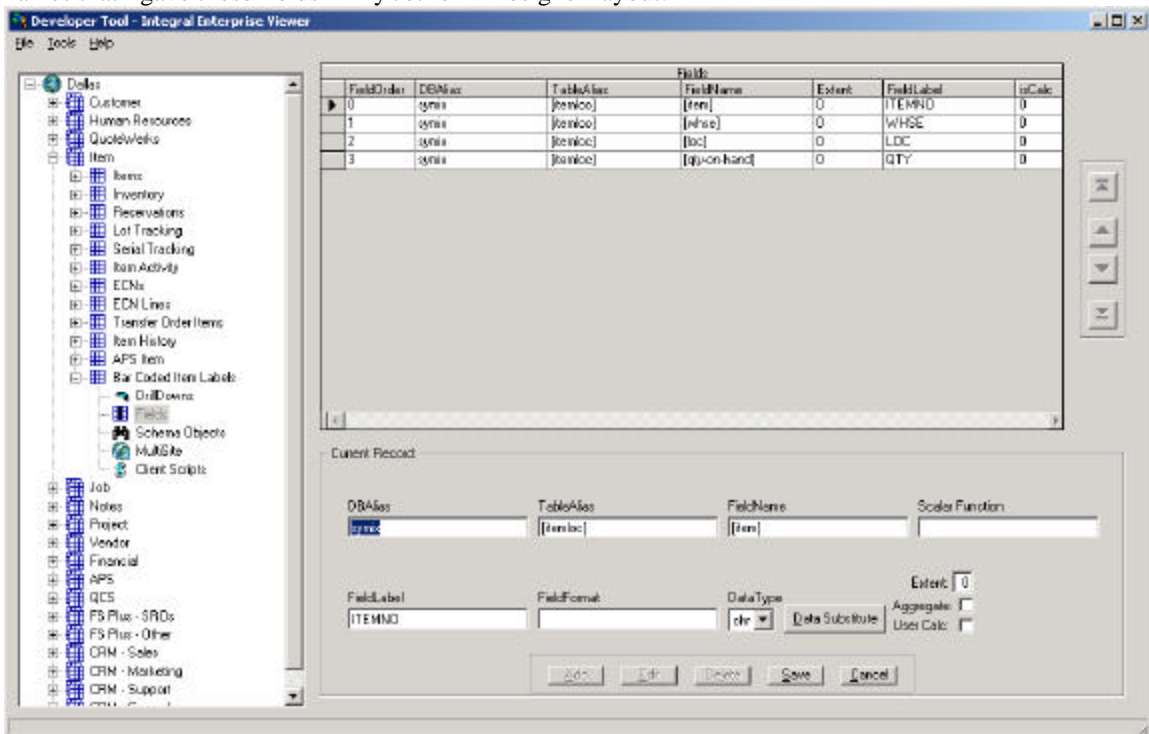
I created a new inquiry Bar-coded Item Labels inside the Items inquiry group. I hit the ellipses (. . .) button to invoke the Join Builder, where I selected just one table: itemloc from the “symix” alias database. After selecting this I hit ‘Add Join’ and “Save”



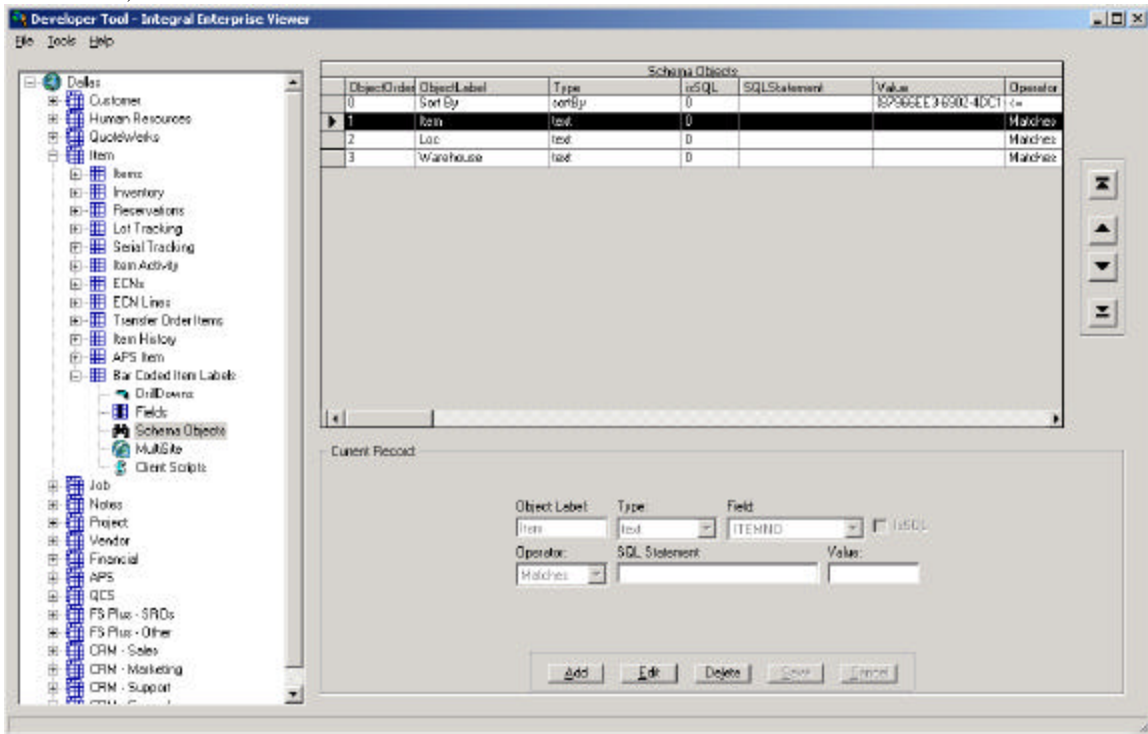
Now the inquiry I creates looks like:



I right-click "Fields" and select "Import Fields." I select four fields from the Item Location table: item, whse, loc, and qty-on-hand. I change my field label for two fields "ITEMNO" and "QTY" to match the names that I gave those fields in my JetForm Designer layout.

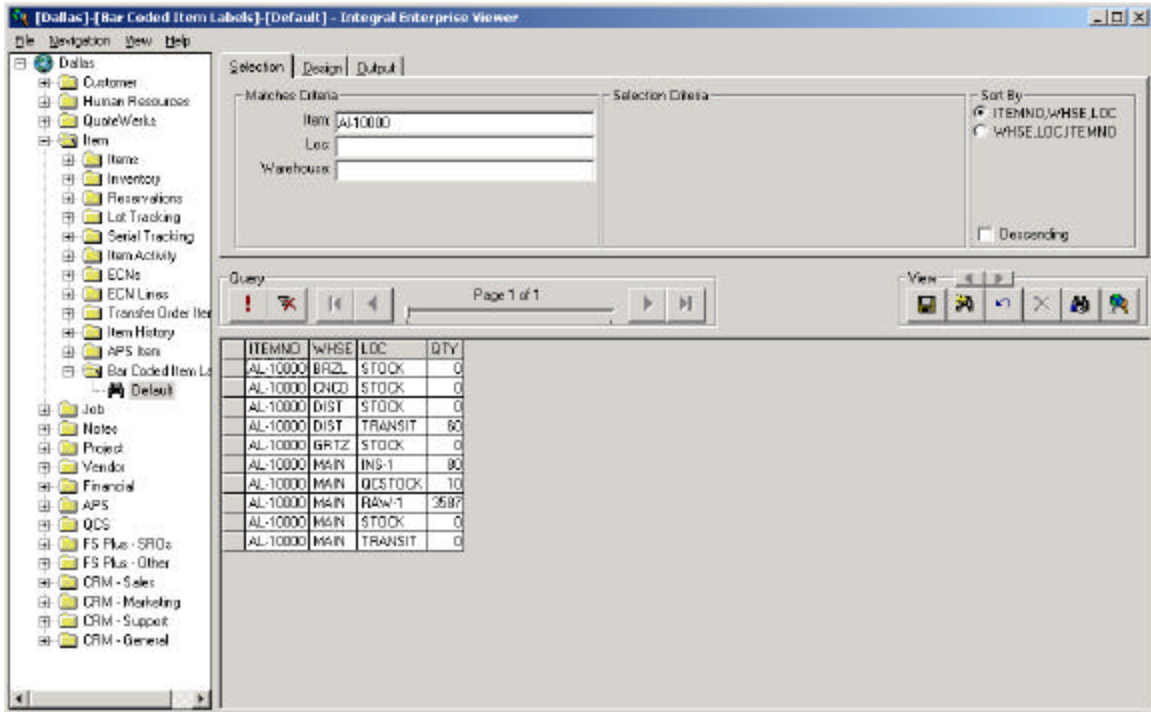


Next, I add four schema objects: a sort-by to let the user control the order the records print in, and then three text fields with “Matches” selected, to allow the user to enter selection criteria for Item number, Warehouse, and Location:

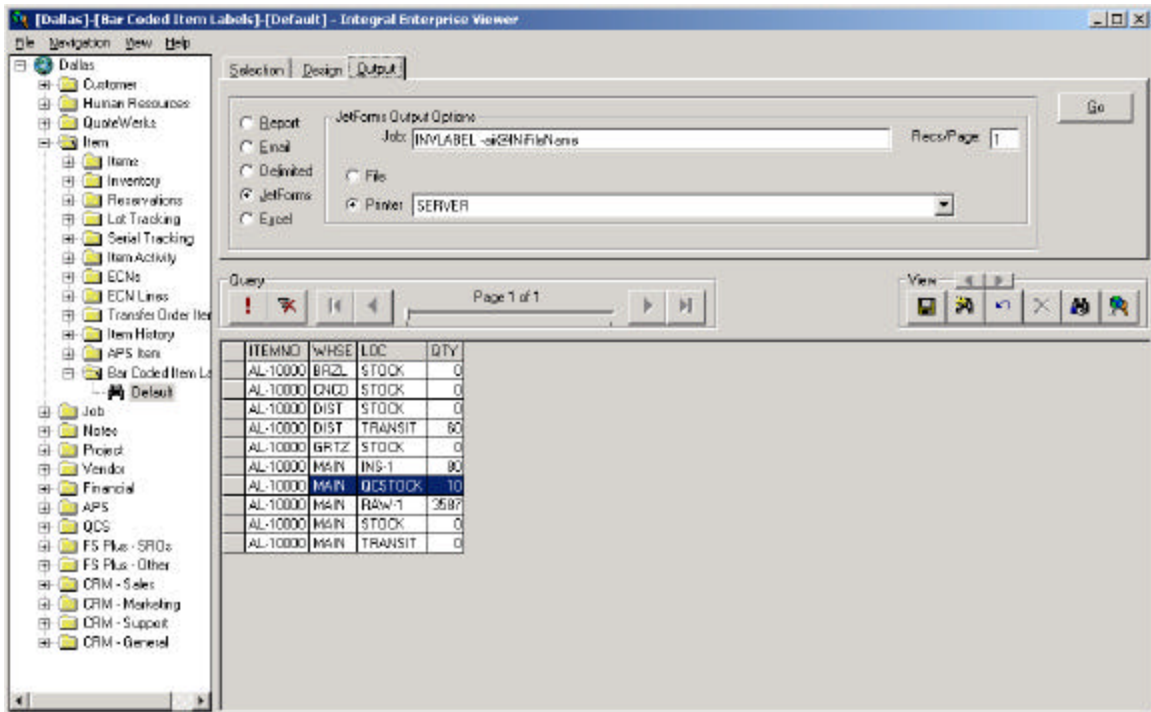


g. Next I switched over to the Integral Administrator Tool and setup “Security – Site/Inquiry/Field/Script Security” to give my groups “Yes” access to this inquiry and all its fields. I right-click the group, and select “Change All Users to UseGroup” to extend these rights to all my users. Finally I select “Security – Manage Default Views” and right-click my new inquiry, selecting “Regen Default Views for All Users” to create a default view for my inquiry for all users. Now we are ready to run the Inquiry from the LAN Client, and to create our bar-coded PDF outputs.

h. In the Integral LAN Client, I invoke my new inquiry’s default view, and we query all inventory records for item “AL-10000”:



Now I switch to the “Output” tab, and fill in my JetForms Job, records per page, and JetForms Named Pipe Printer name:



Notes: the [-aii@IniFileName](#) is an option that is usually required with SyteLine Advanced Forms 6, for custom JetForms jobs that you create. I have selected 1 (one) record per page, meaning that Integral outputs, to the JetForm Named-pipe printer, a field-nominated file that names each field after the Field Labels given to the fields in the Integral View. If I select more than one record per page, JetForms, instead of expecting a layout with fields named like “ITEMNO” and “LOC” will expect to be outputting to a form

with fields named like “ITEMNO-1,” “ITEMNO-2,” “LOC-1,” and “LOC-2.”

i. With the options show above, hitting the “Go” button on the Output page in the LAN client generates the desired PDF output file:

